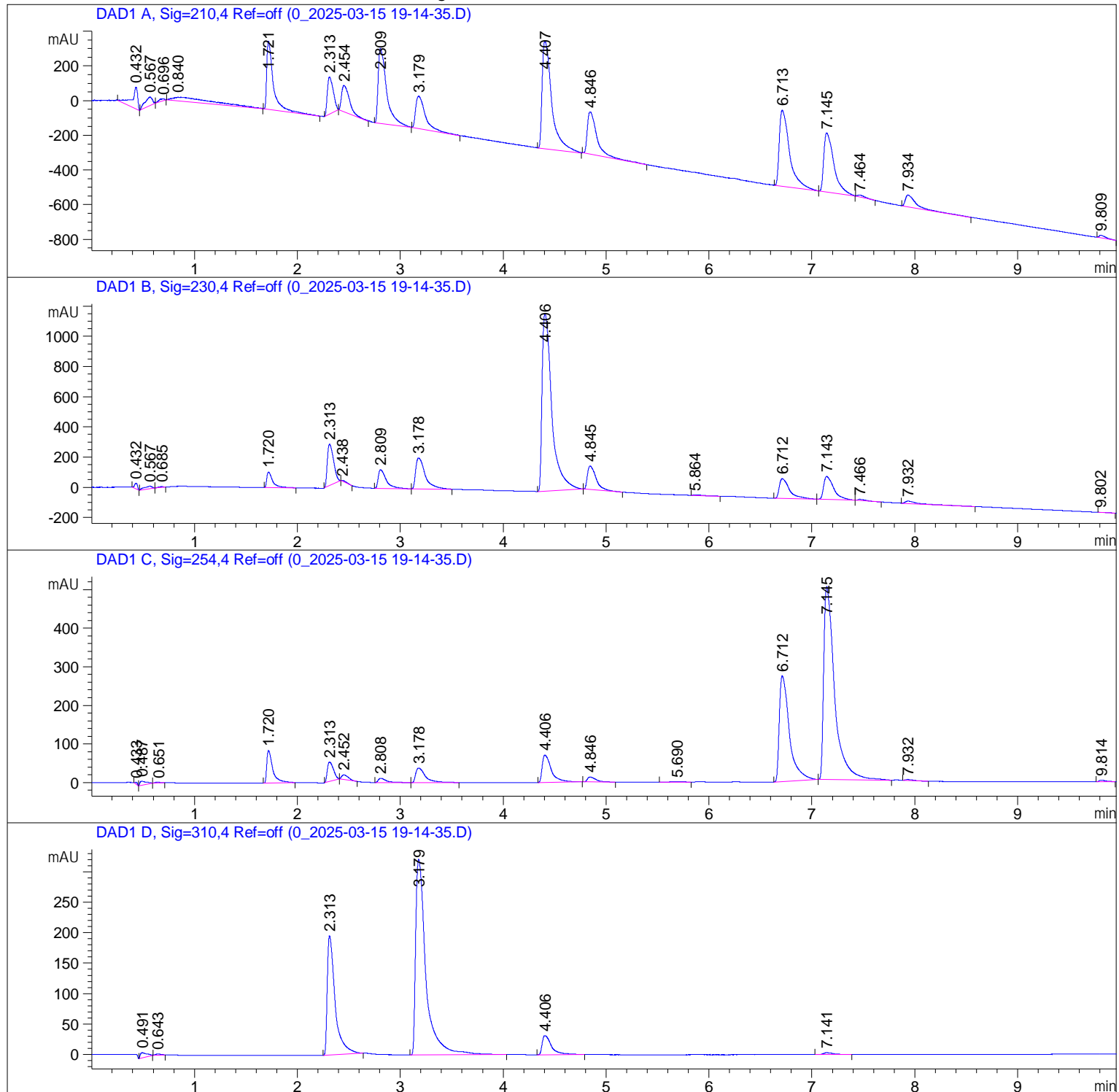


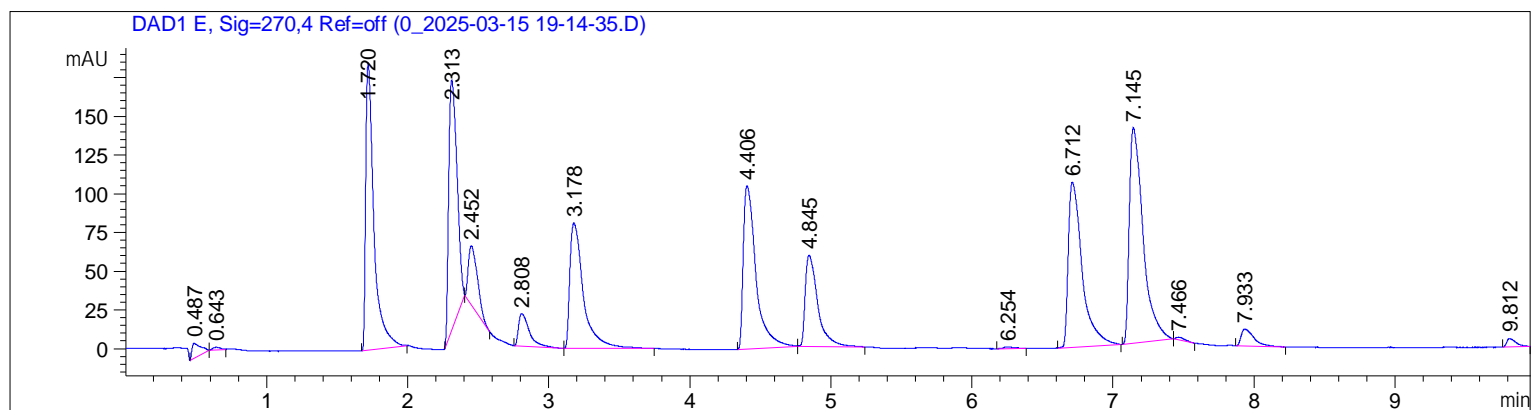
Sample Name: Lucy test

=====

Acq. Operator : SYSTEM
Sample Operator : SYSTEM
Acq. Instrument : LC no MS Location : P1-A-01
Injection Date : 3/15/2025 7:14:59 PM Inj : 1
Inj Volume : Inj prog
Method : C:\ChemStation\1\Methods\GENERAL-POROSHELL-OPT.M
Last changed : 3/15/2025 7:08:58 PM by SYSTEM
(modified after loading)



Sample Name: Lucy test



=====
 Area Percent Report
 =====

Sorted By : Signal
 Multiplier : 1.0000
 Dilution : 1.0000
 Do not use Multiplier & Dilution Factor with ISTDs

Signal 1: DAD1 A, Sig=210,4 Ref=off

Peak #	RetTime [min]	Type	Width [min]	Area [mAU*s]	Height [mAU]	Area %
1	0.432	BB	0.0555	485.19531	124.30416	2.4131
2	0.567	BB	0.0796	257.55472	48.78463	1.2809
3	0.696	BB	0.0609	50.85287	10.60678	0.2529
4	0.840	BB	0.3749	678.83380	21.40951	3.3761
5	1.721	BB	0.0676	1762.82019	390.82043	8.7672
6	2.313	BB	0.0676	851.01276	213.20390	4.2324
7	2.454	BB	0.0838	801.11407	151.25850	3.9842
8	2.809	BB	0.0875	2464.01489	432.54242	12.2545
9	3.179	BB	0.1023	1231.39880	185.86574	6.1242
10	4.407	BB	0.1006	4008.43726	618.90271	19.9355
11	4.846	BB	0.0984	1578.09131	244.17485	7.8484
12	6.713	BB	0.1077	3030.64380	437.86688	15.0725
13	7.145	BB	0.1075	2322.40088	340.61853	11.5502
14	7.464	BB	0.0732	53.12651	10.30407	0.2642
15	7.934	BB	0.1033	463.20578	68.17668	2.3037
16	9.809	BBA	0.0645	68.35677	14.91625	0.3400

Totals : 2.01071e4 3313.75606

Signal 2: DAD1 B, Sig=230,4 Ref=off

Peak #	RetTime [min]	Type	Width [min]	Area [mAU*s]	Height [mAU]	Area %
1	0.432	BB	0.0327	73.48591	37.03105	0.5051
2	0.567	BB	0.0737	92.85235	16.25090	0.6382
3	0.685	BB	0.0446	12.73687	3.57015	0.0875

Sample Name: Lucy test

Peak #	RetTime [min]	Type	Width [min]	Area [mAU*s]	Height [mAU]	Area %
4	1.720	BB	0.0608	417.44415	103.02573	2.8691
5	2.313	BB	0.0680	1156.74939	275.33163	7.9503
6	2.438	BB	0.0535	28.20199	6.58568	0.1938
7	2.809	BB	0.0846	681.93774	124.10142	4.6869
8	3.178	BB	0.1006	1325.47607	205.82356	9.1100
9	4.406	BB	0.0922	7728.07324	1175.34973	53.1148
10	4.845	BB	0.0837	917.84918	155.96957	6.3083
11	5.864	BB	0.0773	21.27885	3.31747	0.1462
12	6.712	BB	0.0983	895.96173	130.09888	6.1579
13	7.143	BB	0.0960	1039.55371	152.61066	7.1448
14	7.466	BB	0.0646	41.90356	7.93087	0.2880
15	7.932	BB	0.0873	106.25801	15.33506	0.7303
16	9.802	BBA	0.0591	9.99730	2.04392	0.0687

Totals : 1.45498e4 2414.37629

Signal 3: DAD1 C, Sig=254,4 Ref=off

Peak #	RetTime [min]	Type	Width [min]	Area [mAU*s]	Height [mAU]	Area %
1	0.433	BB	0.0265	7.37282	4.64259	0.1043
2	0.487	BB	0.0573	45.43443	10.75900	0.6428
3	0.651	BB	0.0470	6.94517	1.79929	0.0983
4	1.720	BB	0.0610	338.19058	83.97298	4.7846
5	2.313	BB	0.0664	203.55623	50.14921	2.8798
6	2.452	BB	0.0669	53.61855	11.82168	0.7586
7	2.808	BB	0.0758	61.74057	11.02844	0.8735
8	3.178	BB	0.1024	247.74770	37.57854	3.5050
9	4.406	BB	0.0979	442.40042	70.82701	6.2589
10	4.846	BB	0.0809	73.04330	12.46162	1.0334
11	5.690	BB	0.1129	10.98825	1.17230	0.1555
12	6.712	BB	0.1059	1861.27820	273.49921	26.3325
13	7.145	BB	0.1144	3683.54712	500.23209	52.1132
14	7.932	BB	0.0631	13.57202	2.63545	0.1920
15	9.814	BBA	0.0593	18.92500	4.18089	0.2677

Totals : 7068.36035 1076.76029

Signal 4: DAD1 D, Sig=310,4 Ref=off

Peak #	RetTime [min]	Type	Width [min]	Area [mAU*s]	Height [mAU]	Area %
1	0.491	BB	0.0592	36.00830	8.44868	1.0194
2	0.643	BB	0.0476	5.81937	1.61227	0.1648
3	2.313	BB	0.0818	1037.22009	195.69193	29.3644
4	3.179	BB	0.1061	2235.06250	321.40805	63.2760
5	4.406	BB	0.0956	198.17441	31.41846	5.6104
6	7.141	BB	0.0821	19.95629	2.92369	0.5650

Sample Name: Lucy test

Peak #	RetTime [min]	Type	Width [min]	Area [mAU*s]	Height [mAU]	Area %
Total s :				3532.24096	561.50307	

Signal 5: DAD1 E, Sig=270,4 Ref=off

Peak #	RetTime [min]	Type	Width [min]	Area [mAU*s]	Height [mAU]	Area %
1	0.487	BB	0.0591	40.67718	9.65899	0.8001
2	0.643	BB	0.0466	6.39048	1.73132	0.1257
3	1.720	BB	0.0616	748.66327	185.48213	14.7265
4	2.313	BB	0.0669	655.40588	161.35254	12.8920
5	2.452	BB	0.0772	173.46692	38.05777	3.4122
6	2.808	BB	0.0780	114.44651	21.19077	2.2512
7	3.178	BB	0.1027	546.67181	80.99390	10.7532
8	4.406	BB	0.0977	656.34705	105.34077	12.9106
9	4.845	BB	0.0968	361.60440	58.77856	7.1129
10	6.254	BB	0.0642	5.91264	1.10887	0.1163
11	6.712	BB	0.1061	726.43945	106.50653	14.2893
12	7.145	BB	0.1074	946.24457	139.02884	18.6129
13	7.466	BB	0.0541	7.50034	1.80212	0.1475
14	7.933	BB	0.0820	68.86977	11.00961	1.3547
15	9.812	BBA	0.0621	25.15947	5.57804	0.4949
Total s :				5083.79974	927.62076	

*** End of Report ***